

This is a summary of activities carried out by KLTC Technical Team during FEB/MAR 2024 in an effort to re-open The Brow footpath using a cost-effective approach that is low risk and safe for Public access.

Monthly Report No.4 – 12MAR24 was presented to Kirkby Lonsdale Town Council at the monthly Council meeting on 13MAR24.

The Technical Team continued to make progress through FEB/MAR 2024, concentrating on Monitoring Surveys and contacting Westmorland & Furness Council (W&FC) Engineers to determine what criteria must be met in order to re-open The Brow.

Stage 1a. – Tree Management and Vegetation Clearance:

Last months Arboriculture Report was sent to Yorkshire Dales National Park Authority (YDNPA) for them to review and approve the minor tree cropping required, ensuring branches overhanging the footpath can be safely removed.

Stage 1b – Survey Monitoring of The Brow:

Monthly survey No.3 of 6 was completed early MAR24. Data will not be reported until at least four months of results have been analysed, but early results are positive.

Further surveys will be required at the top of the embankment to check the condition of footpath support (existing gabions and concrete edge beams). It is likely that part of the footpath is 'undercut' because of drainage issues washing away 'fines' at the top of the embankment. See Photo 1.



Photo 1. – Undercutting of footpath.



Photo 2. – No support under corner of North platform.

When The Brow was closed in SEPT 2021, there was concern that the North Viewing Platform was in a dangerous state – a corner showed signs of dropping. Our initial 'condition survey' shows why... there is no support or foundation under the slabs, only a simple rock. There is no land slide on the embankment, only poor foundation support, which can be easily rectified.

The Team has contacted Senior Engineers at Westmorland & Furness Council (W&FC). Discussions are ongoing to determine what criteria is required to satisfy the Council in order to re-open The Brow. Remedial construction work and future monitoring will be our main tasks with details presented to Council Engineers and Countryside Officers.

Planned work for the coming weeks includes a non-intrusive Drainage survey along the footpath and behind the stone retaining wall using Ground Penetration Radar (GPR shown) techniques shown below. This will prove the flow of rainwater over The Brow and into the River Lune. The concern is that surface water is percolating under the footpath and washing away fine soils supporting the edge of footpath

All efforts are ongoing.

One final and very disappointing occurrence...

Despite locked gates preventing general access along The Brow, some pedestrians continue to climb over handrails at the top of Radical Steps and walk along a well-worn path next to the railings. One section of railings has now disappeared, being removed and taken by someone - lost forever through local vandalism.

We will search the embankment for the lost section, but please get in touch if you know how or where we can recover the lost railing.

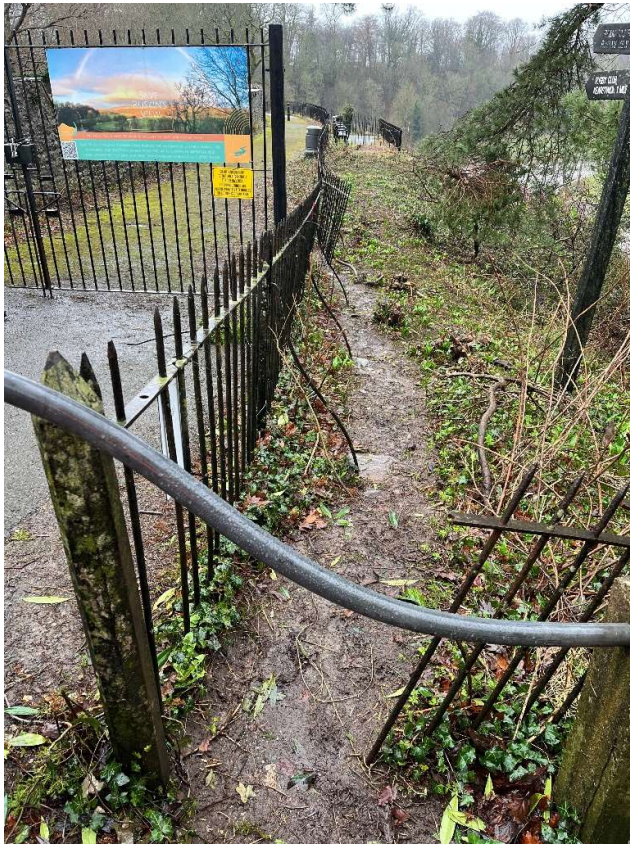


Photo 3. – Well worn path over handrail



Photo 4. – This section of railing is now missing...!

Kind regards
Malcolm

Malcolm Perrin
KLTC Technical Team Lead

Kirkby Lonsdale Town Council

07917 075086